

AVAILABLE
AUTUMN 2010

another **Glenmore** development
www.glenmore-group.co.uk

GlenmoreBusinessPark

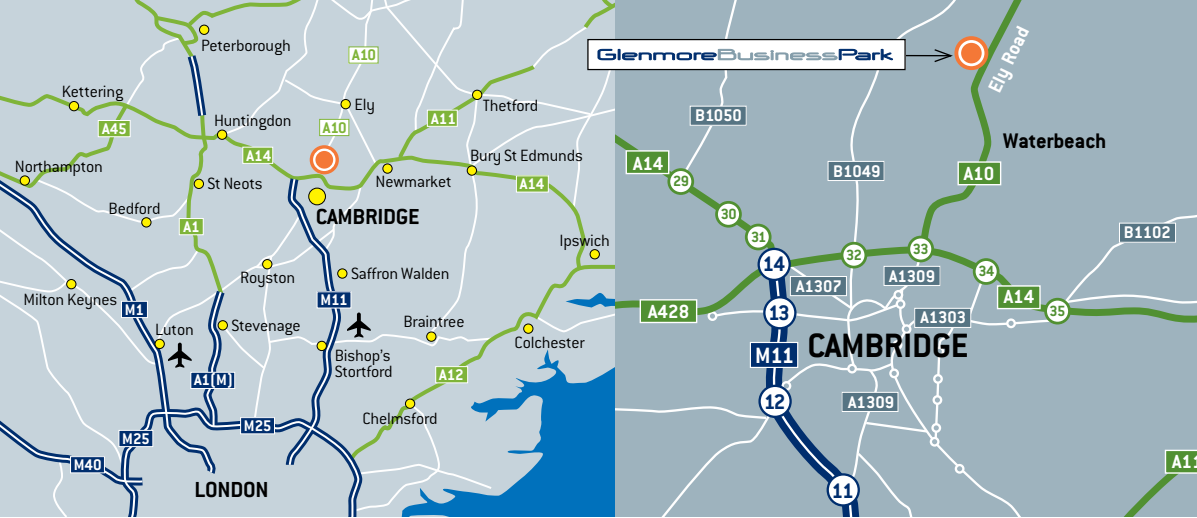
ELY ROAD, WATERBEACH, CAMBRIDGE, CBS 9PG

FREEHOLD
FOR SALE
OR TO LET



NEW DEVELOPMENT OF INDUSTRIAL/WAREHOUSE/TRADE COUNTER UNITS

1,012 - 9,430 sq ft SET IN A LANDSCAPED BUSINESS PARK LOCATION



LOCATION

Located immediately adjacent to the A10, Glenmore Business Park lies just to the north of Cambridge, around three miles from the A14 Milton junction. It benefits from prominent road frontage to the A10 and is situated next to IQ Cambridge (formerly Cambridge Research Park). It is a mixed use location with a range of offices and high technology buildings, as well as industrial, warehouse and trade counter operators.

PHASE I ACCOMMODATION SCHEDULE

Unit No.	Ground Floor Sq Ft	First Floor Sq Ft	Total Sq Ft
BLOCK A			
1	3983	732	4,715
2	3983	732	4,715
BLOCK B			
3	538	474	1,012
4	538	474	1,012
5	538	474	1,012
6	538	474	1,012
7	538	474	1,012
8	538	474	1,012
9	538	474	1,012
10	538	474	1,012
BLOCK C			
11	1,055	527	1,582
12	1,055	527	1,582
13	1,055	527	1,582
14	1,055	527	1,582
15	1,055	527	1,582
16	1,055	527	1,582

DESCRIPTION

Glenmore Business Park is a new development of business and industrial units on a site of approx. 2 acres. The first phase comprises 16 high quality industrial/business units arranged in three blocks with unit sizes ranging from around 94 sq m (1,012 sq ft) to 438 sq m (4,715 sq ft).

TENURE

Freehold or Leasehold.

LEASE TERMS

New full repairing and insuring lease(s) for a term to be agreed, subject to upward only open market rent reviews every 3 years.

SERVICE CHARGE

There will be a service charge for the maintenance and upkeep of the common areas of the Estate.

RENT & PRICE

On application.

VAT

VAT will be payable on the price/rent.

SPECIFICATION

The building specification includes:

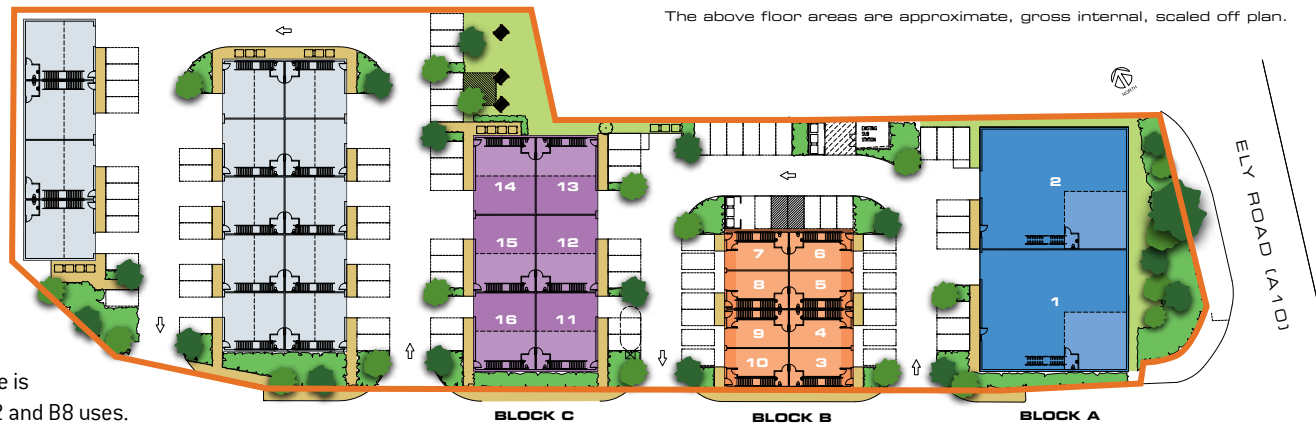
- High quality mini-rib cladding
- Powder-coated aluminium windows and doors
- Ground floor loading of 15kN/m²
- First floor suitable for fit out as offices (subject to necessary consents/regulations)
- Minimum 3m clearance under first floors
- Insulated steel-clad roof incorporating 10% daylight panels
- 6m internal eaves height
- Allocated parking
- Mains water, gas, telecom and 3 phase electricity to all units

BUSINESS RATES

To be assessed.

PLANNING

Planning consent for the development has been granted under the reference S/1141/08/F and the scheme is suitable for a range of B1, B2 and B8 uses.



The above floor areas are approximate, gross internal, scaled off plan.

BIDWELLS

01223 841841

bidwells.co.uk

Cheffins

01223 213666
www.cheffins.co.uk

IMPORTANT NOTICE

Bidwells and Cheffins and their clients give notice that: (i) They have no authority to make or give any representations or warranties in relation to the property. These particulars do not form part of any offer or contract and must not be relied upon as statements or representations of fact. (ii) Any areas, measurements or distances are approximate. The text, photographs and plans are for guidance only and are not necessarily comprehensive. It should not be assumed that the property has all necessary planning, building regulation or other consents and Bidwells and Cheffins have not tested any services, equipment or facilities. (iii) Purchasers must satisfy themselves by inspection or otherwise.

All images are computer generated and for illustration only.

Brochure printed April 2010

Designed & produced by www.property-marketing-support.co.uk Tel: 07595 960952

